

# Basket Pancreatic Cell Model

## PRODUCT INFORMATION SHEET



### Identification

The Basket cell model originates from an adenocarcinoma of the pancreatic head.

Product Name	Catalog Number	Size
Basket Pancreatic Cell Model	CB-0503	1M Cells/ Cryovial

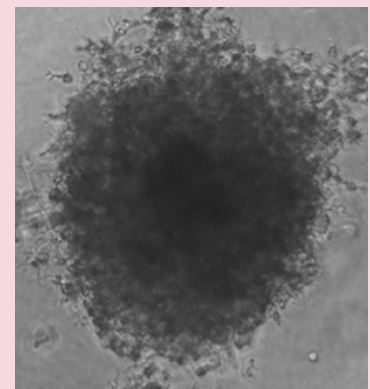
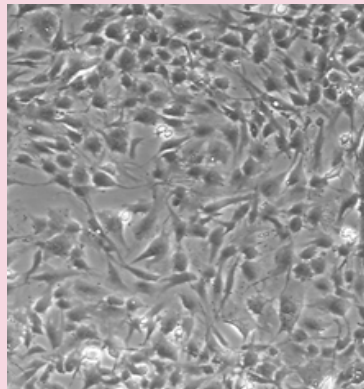
## Cell Line Characterization

### Gene Mutations

**NONE REPORTED**



### Morphology

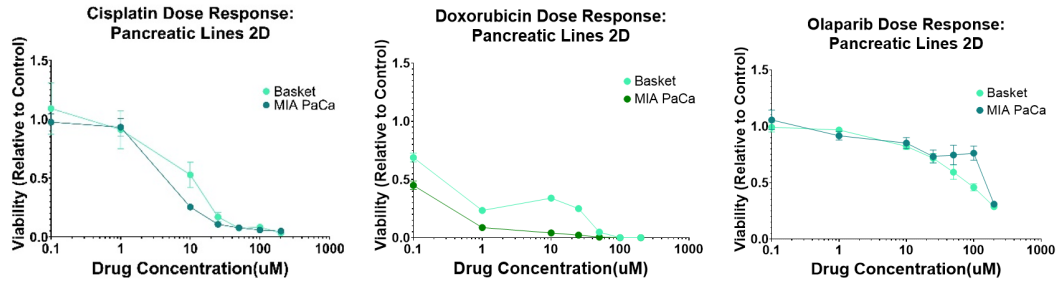


2D vs 3D<sup>1</sup>

# Basket Pancreatic Cell Model

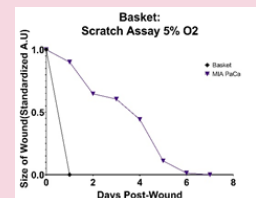
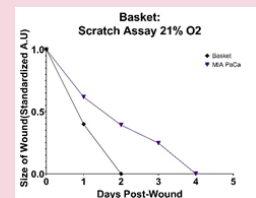
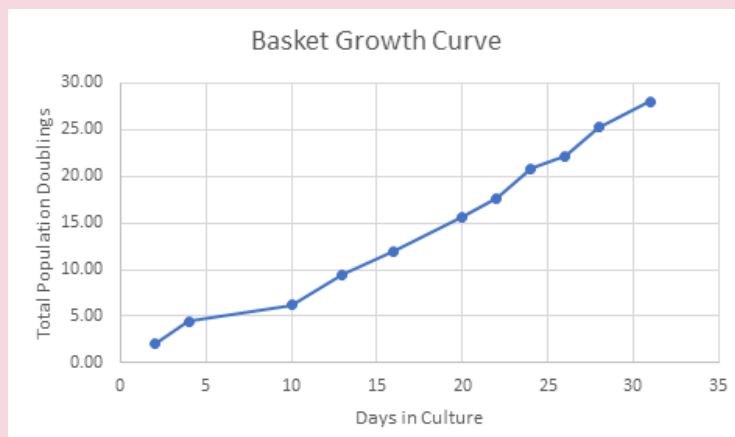
## PRODUCT INFORMATION SHEET

### Drug Response



The Basket Cell Model demonstrates sensitivity to cisplatin and doxorubicin, while showing resistance to Olaparib.

### Basket Growth Characteristics



The historical growth curve of Basket demonstrates consistent and rapid growth. Basket cells grow continuously for 15 passages.



# Basket Pancreatic Cell Model

## PRODUCT INFORMATION SHEET

### Patient Profile



Disease Area	Cancer	TNM Stage	T3N1Mx
Tissue Type	Pancreas	Staging Group	
Clinical Diagnosis	Invasive, moderately differentiated adenocarcinoma of the pancreatic head	Country of Collection	United States
Age	70-75	Year of Origin	2016
Sex	Female	Treatment History	No prior treatment
Ethnicity	Caucasian	Concurrent Diseases	Arthritis, osteoporosis, anxiety, depression

### Cell line protocol

**Thawing and Plating Instructions:** See Certificate of Analysis for lot-specific details.

See <https://www.cellariabio.com/product/basket-cell-model/> for detailed protocol

### Storage & safety

**Storage and Stability:** Store frozen in liquid nitrogen.

**Quality Control:** All lots are tested for microbial and viral contamination, cell line cross-contamination, mycoplasma, and consistent growth capabilities.

See Certificate of Analysis for further details.

### NOTES

1. 3D cell culture of Cellaria™ models utilizes 5% Matrigel™ in Renaissance Essential Tumor Medium.

